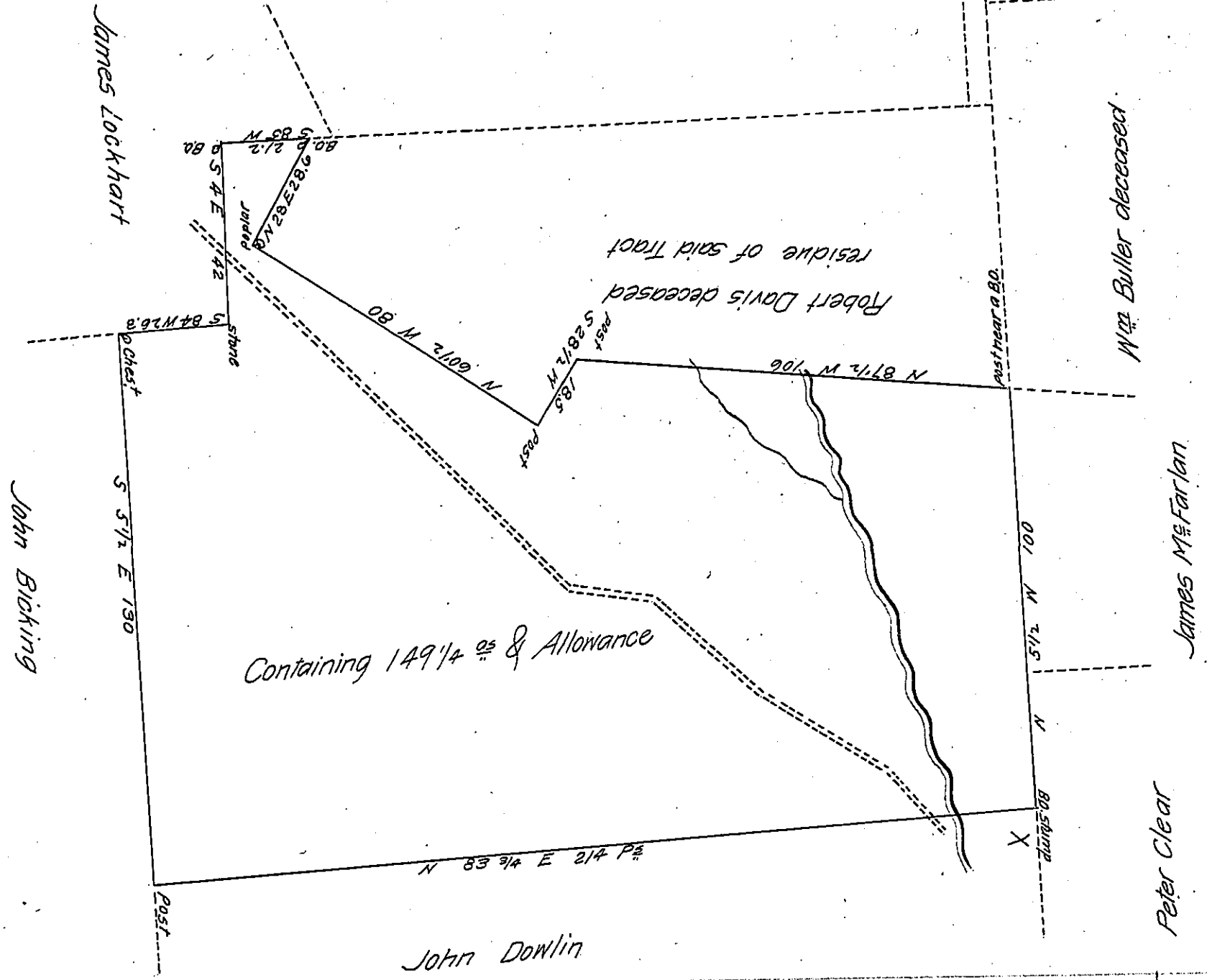


FORM NO 1.



The above Draft describes a Tract of Land situate in Brandywine (formerly East Caln) Township Chester County containing 149 1/4 ac & allowance of Six Per Cent &c Being part of a Tract of 199 ac 128 ac & allowance of Land which was surveyed the 15th of the 9th Mo. 1775 to Thomas Temple on Warrant dated the 17th day of January 1733.

Feb'y 12th 1813

Surveyed by Ja. Hindman D.S

Andrew Porter Esq. }
 Surveyor General }

IN TESTIMONY that the above is a copy of the original remaining on file in the Department of Internal Affairs of Pennsylvania, made conformably to an Act of Assembly approved the 16th day of February, 1833, I have hereunto set my Hand and caused the Seal of said Department to be affixed at Harrisburg, this third day of May 1907

Lauchlin Curran
 Secretary of Internal Affairs.